

## Erratum to: Metformin Decreases the Expression of VEGF-A and CTGF-1 and Improves Histological, Ultrastructural and Hormonal Changes in Adult Rat Polycystic Ovary

Ghalia Mahfouz ATTIA, Rasha Ahmed ELMANSY, and Mohamed H. ELSAYED

Accepted December 05, 2019

Published online December 06, 2019

Issue online December 31, 2019

### Erratum

In the original article:

ATTIA G.M., ELMANSY R.A., ELSAYED M.H. 2019. Metformin decreases the expression of VEGF-A and CTGF-1 and improves histological, ultrastructural and hormonal changes in adult rat polycystic ovary. *Folia Biologica (Kraków)* 67: 25-43.  
[https://doi.org/10.3409/fb\\_67-1.03](https://doi.org/10.3409/fb_67-1.03)

Authors published incorrect Fig. 3B. The correct version of Fig. 3 is below:

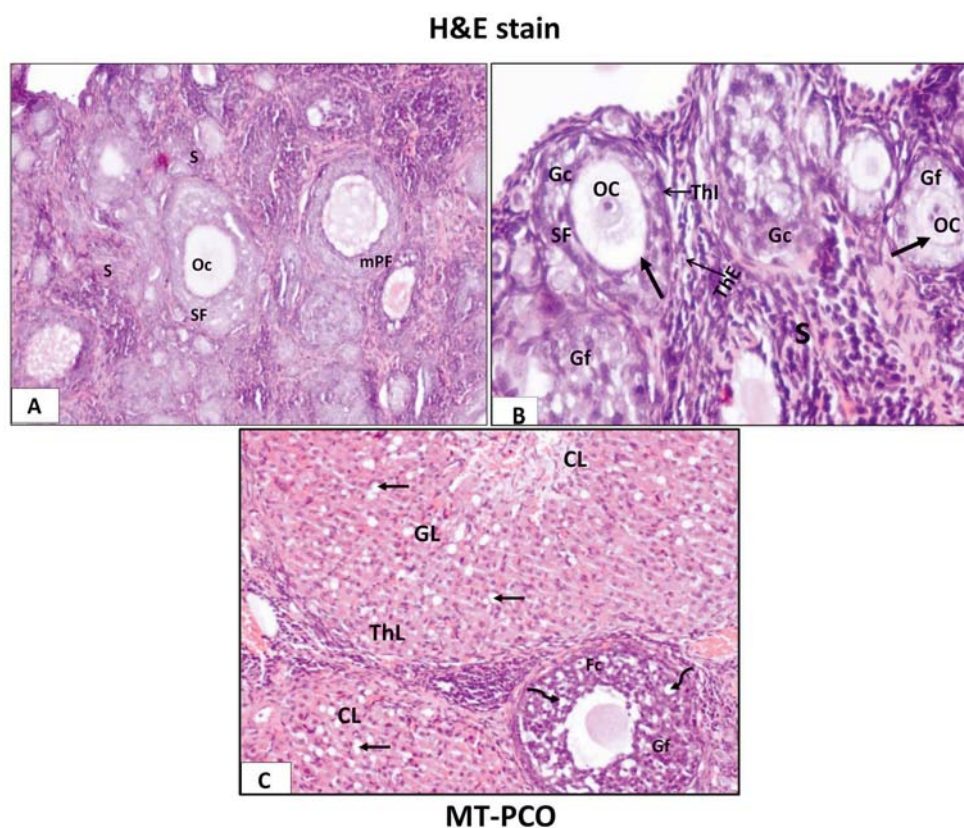


Fig. 3. Photomicrography of MT-PCO H&E stained section showing: A – nearly normal ovarian cortex with many follicles in different stages of development; multilayered primary follicles (mPF) and secondary follicles (SF) containing an oocyte (Oc) in its lumen. Note the little amount of interstitial stroma (S) when compared to that of PCO. B – Many growing (Gf) and secondary follicles. Both have thick walls formed of many layers of granulosa cells (Gc), theca interna (ThI) and theca externa layers (ThE). An oocyte (Oc) surrounded by zona pellucida (arrow) and little stroma (S) are seen. C – Two corpora lutea (CL) with small lipid droplets (arrows) in their granulosa (GL) and theca lutein (ThL) cells. One growing follicle (Gf) is apparent with some vacuolations (curved arrows) of its follicular cells (Fc). H&E stain; A&Bx400, Cx100.