

Scientific note

The female of *Microteuchestes brusewitzi* (LANDIN, 1974) (Coleoptera: Scarabaeoidea: Aphodiidae)

Marco DELLACASA and Giovanni DELLACASA

Received: 30 Nov. 2005

Accepted: 6 Feb. 2006

DELLACASA M., DELLACASA G. 2006. The female of *Microteuchestes brusewitzi* (LANDIN, 1974) (Coleoptera: Scarabaeoidea: Aphodiidae). *Acta zoologica cracoviensia*, **49B**(1-2): 181-182.

Abstract. The female of *Microteuchestes brusewitzi* (LANDIN, 1974) unknown to date, is described and figured.

Key words: Coleoptera, Scarabaeoidea, Aphodiidae, *Microteuchestes brusewitzi*, female.

Marco DELLACASA, Università di Pisa, Museo di Storia naturale e del Territorio. Via Roma 79, 56011 Calci (Pisa), Italy.

E-mail: dellacasa@museo.unipi.it

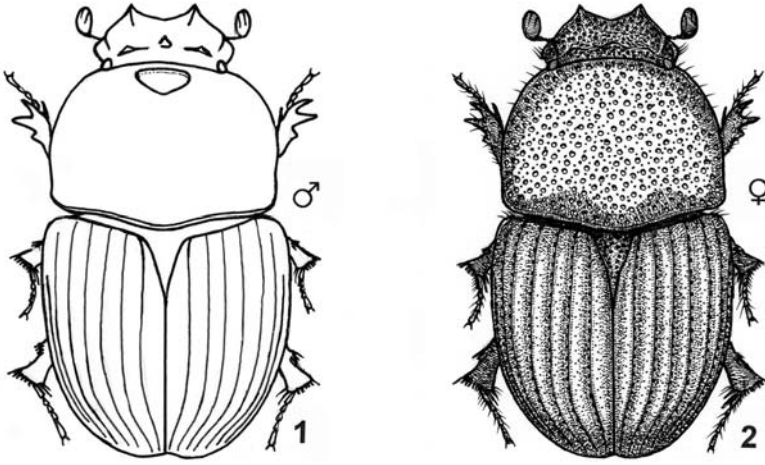
Giovanni DELLACASA, C.P. 921-16121 Genova, Italy.

Our dear friend and colleague Patrice BORDAT (Verrière le Buisson, Paris) offered for our collection a female specimen of *Microteuchestes brusewitzi* (LANDIN, 1974) from **South Africa: Transkei, Dwesa coast**.

Only the males of this species were hitherto known (Dellacasa et al. 2001), therefore we describe herein the sexual characters of the taxon:

Male: median tubercle of frontal suture subcorniculate, distinctly stronger than lateral ones; pronotum not narrowed frontwardly, with a feeble foveola at middle of anterior margin; apical spur of fore tibiae relatively shorter, stouter and abruptly bent downward (Fig. 1).

Female: median tubercle of frontal suture very weak, the lateral ones almost obsolete; pronotum somewhat narrowed frontwardly, without anterior median foveola; apical spur of fore tibiae relatively longer, slender and almost straight (Fig. 2).



Figs 1-2: *Microteuchestes brusewitzi* (LANDIN, 1974): 1 – schematic habitus of the male; 2 – habitus of the female (length 4.0 mm) (South Africa, Trankei, Dwesa Coast).

REFERENCES

- DELLACASA G., BORDAT P., DELLACASA M. 2001. A revisional essay of world genus-group taxa of Aphodinae. *Memorie della Società entomologica Italiana*, **79**: 1-481.