

Józef RAZOWSKI

Catalogue of *Saphenista* WALSM. (*Lepidoptera*, *Tortricidae*) with Descriptions of New Species

[with 25 text-figs.]

Katalog *Saphenista* WALSM. (*Lepidoptera*, *Tortricidae*) z opisami nowych gatunków

Abstract. Nineteen species is included in *Saphenista* WALSM. of which 10 species are described as new.

Characteristics of *Saphenista* WALSINGHAM is provided by this author (RAZOWSKI, 1985). In the present paper 19 species are placed in *Saphenista*. Other species described in this genus are referable to several allied genera, e. g. *Phalonidia* LE MARCH., *Platphalonidia* RAZ. and *Lasiothyris* MEYR. The genus in question may be divided into two groups; in group one the species characterize with rounded convexity of outer edge of vinculum and typically developed caulis, in group two the outer edge of vinculum is armed with more or less elongate, acute process and the caulis is fused with the ventral edge of the aedeagus. The latter is somewhat asymmetrical in distal portion.

The holotypes of the new described species are deposited in the collection of the University of California, Berkeley and have been kindly provided by Prof. Dr. Jerry A. POWELL whom I would like express my sincere thanks.

DESCRIPTIONS OF NEW SPECIES

***Saphenista nongrata* sp. n.**

Alar expanse, 10 mm. Labial palpus 1.5, brownish to middle, white posteriorly; remaining parts of head and terminations of tegula whitish, otherwise thorax olive brown. Forewing not expanding terminally; costa curved outwards; apex delicately rounded; termen almost straight, somewhat oblique. Ground colour cream, suffused with pale olive-brown especially along wing edges;

pattern brownish; dorso-basal blotch slender, subtriangular; median fascia divided into subtriangular costal part, mixed with yellowish terminally, small dorsal subsquare blotch and two vertically elongate median markings. Subterminal blotch from top of costal convexity, fused apically with median markings. Fringes pale olive-brown. Hindwing brownish grey with slightly paler fringes. Variation: in some specimens ground colour strongly suffused with olive-brown showing paler area above costal portion of median fascia that is mixed with yellow-brown. Terminal pattern occasionally dark brown, pale edged.

Female genitalia (Fig. 17): Apophyses, especially apophyses posteriores long; papilla analis moderate; antrum strongly sclerotized, with almost straight ventro-terminal edge, membranously connecting with apophyses anteriores. Ductus bursae very short, membranous; corpus bursae minutely spined throughout; accessory bursa not expanding terminally, built of thick membrane; ductus seminalis dorsal.

Holotype, female: "Mex: Veracruz, Fortin de las Flores XII—23—63; C. A. TOSCHI, M. J. TAUBER Collectors"; G. S. 11780. Paratypes: 8 females labelled as above but one from Cordoba, Vera Cruz, Mexico, collected on 25. VII 1966.

Sapthenista mediocris sp. n.

Alar expanse, 12 mm. Labial palpus 1.5, pale ochreous, cream white beyond middle, front and vertex whitish; thorax dirty ochreous, browner anteriorly. Forewing hardly expanding terminally; costa almost straight; apex rounded; termen straight, weakly oblique. Ground colour cream, mixed with greyish dorsally, with ochreous brown along costa in anterior half of wing, glossy pearl among pattern in distal area. Pattern in form of ferruginous dorso-basal blotch and dorsal part of median fascia, remaining, costal part of the latter olive-brown concolorous with elongate subapical clotch reaching termen before tornus and more ochreous tornal marking; some black scales on the latter, medially. Fringes pale ochreous cream, cream towards tornus, mixed with olive-grey towards apex, with brownish olive median line in costal half of wing. Hindwing brownish grey; fringes paler with distinct median line.

Female genitalia (Fig. 18): Papilla analis small; apophyses moderate; sterigma small, consisting of ventral margin of well sclerotized, concave anteriorly antrum and posterior hairy convexities situated laterally. Distal part of ductus bursae distinctly sclerotized, remaining parts with less strongly sclerotized longitudinal folds, entering corpus bursae laterally; lateral concavity before distal portion of dictus; accessory bursa just beyond concavity, dorsally; ductus seminalis from median concavity of corpus bursae, ventrally.

Holotype, female: "Mex: Nuevo Leon 4 mi W. Iturbide IX—13/14—76; J. A. CHEMSAK, J. POWELL at light"; G. S. 6068.

Saphenista praia sp. n.

Alar expanse, 10 mm. Labial palpus as in preceding species. Forewing with convex costa and termen. Ground colour cream; pattern brownish ochreous consisting of dorso-basal elongate, subtriangular blotch, median fascia divided into four blotches as in *S. nongrata* and slender subapical blotch reaching middle of termen. Fringes damaged. Hindwing dirty cream with paler fringes.

Male genitalia (Figs 1—4): Socius long, bristled and hairy; uncus like process rounded; median portion of transtilla provided with additional 10 dents; Vinculum with indistinct lateral prominences; valva tapering terminally; sacculus simple. Aedeagus slender with bulbous proximal part of coecum penis; cornutus very long, curved, with strong base.

Holotype, male: "Costa Rica, 6 km. S. San Vito, Puntarenas Prov. V—2 & 5—76; D. F. VEIRS Collector"; G. S. 11777.

Saphenista affecta sp. n.

Alar expanse, 10 mm. Labial palpus 1.5, pale ochreous, whitish above; remaining parts of head cream; thorax ferruginous, cream posteriorly. Forewing rather not expanding terminally; costa uniformly weakly convex; apex rounded; termen convexely oblique. Ground colour pale ochreous cream with some glossy scales, ferruginously suffused especially in basal and terminal portions of wing, pale above costal portion of median fascia. The latter dark ferruginous, diffuse, atrophying dorsally, mixed with black in costal half; terminal pattern in form of purple-ferruginous, slender blotch extending from costa subapically; some black scale in middle of terminal area. Fringes ferruginous cream with darker, indistinct median line. Hindwing slender, brownish grey with darker venation; fringes paler, in anal area mixed with cream.

Female genitalia (Figs 19,20): Sterigma in form of short dorsal plate extending ventro-laterally; antrum strongly sclerotized, very broad, fused with large ductus bursae; corpus bursae membranous anteriorly, with strong collar-shaped sclerite of ductus bursae entering distally; accessory bursa with very long ductus originating in distal part of ductus bursae, ventrally; ductus seminalis from dorso-lateral concavity of anterior sclerite of bursa copulatrix.

Holotype, female: "Mex: Veracruz, Fortin de las Flores, VII—7 to 12—74, Elev. 1010 m; J. A. CHEMSAK, J. POWELL at lights"; G. S. 11759.

Saphenista temperata sp. n.

Alar expanse, 10 mm. Labial palpus over 1, ochreous cream, front and vertex yellowish cream; thorax brownish yellow. Forewing weakly expanding terminally; costa delicately curved outwards; apex rather rounded; termen weakly convex, distinctly oblique (less so in paratype). Ground colour yellowish

cream with some groups of erect pearl scales, suffused with ochreous especially along wing edges; costa mixed with brownish basally. Pattern much darker than ground colour, diffuse, with indistinct basal blotch and with atrophying median and dorsal portions of median fascia; subapical blotch diffusing in middle breadth of wing, marked with some black scales medially; some minute groups of blackish scales at tornus and disc. Fringes concolorous with ground colour. Hindwing pale brownish grey, with slightly paler fringes.

Female genitalia (Fig. 21): Antrum cup-shaped, strongly sclerotized ventrally; sterigma membranous, moderately spined; ductus bursae weakly sclerotized, folding longitudinally; corpus bursa membranous; accessory bursa rudimentary, in form of short ventral process extending from middle of folded area of ductus bursae; ductus seminalis proximal, from subdorsal area of corpus bursae.

Holotype, female: "Mex: Tamaulipas, 12 mi SW C[uida]d Victoria, 4000' IX—18—76; J. A. CHEMSAK, J. POWELL at lights"; G. S. 11787.

Saphenista consulta sp. n.

Alar expanse, 7 mm. Labial palpus 1, pale ochreous brownish, white otherwise; front and vertex cream white; thorax yellowish cream, brownish anteriorly. Forewing not expanding terminally; costa delicately convex; termen convex, oblique. Ground colour dotted with black especially in distal half of wing; base of wing yellow-brown interrupted in middle to form dorsal, subtriangular blotch; median fascia broad, diffuse, brownish ochreous, rather distinct at costa; subapical blotch concolorous, black at costa, not reaching middle breadth of wing; black dashes along termen. Fringes cream. Hindwing pale brownish grey; fringes cream.

Male genitalia (Figs 5—7): Socius long; apical prominence of tegumen small, rounded; vinculum broad medially, with short sharp prominence. Median portion of transtilla long, thin except for top part. Valva slender with well developed basal sclerite of internal surface; sacculus very short. Aedeagus slender, with thin, long terminal part; caulis fused with aedeagus; cornutus fairly large, capitate.

Holotype, male: "Costa Rica, 6 km S. San Vito, Puntarenas Prov. IV, 20 & 27—67; D. F. VEIRS Collector"; G. S. 11779.

Saphenista illimis sp. n.

Alar expanse, 14 mm. Labial palpus 2, olive-ochreous, white beyond middle and dorsally; front white; vertex and base of tegula olive-ochreous, middle of thorax dirty ochreous with grey hue. Forewing not expanding terminally; costa delicately convex; termen oblique, hardly convex. Ground colour whitish cream, with indistinct yellowish hue, somewhat glossy; some brownish grey dots along costa; basal part of costa suffused with brownish, dorsal marking indistinct; median fascia ochreous-olive at costa, mixed with brown in middle,

atrophying dorsally; subapical and apical markings ochreous-olive, dotted with black; brown suffusion on olive postdiscal shade. Fringes cream. Hindwing brownish grey; fringes more cream. Variation: some specimens dark with pale ochreous cream ground colour and well developed pattern.

Male genitalia (Figs. 8, 9): Median portion of sterigma strong; process of vinculum distinct but short; valva up-curved, tapering terminally, with ventral, rounded prominence beyond sacculus; sacculus strong, marked with transverse, postmedian rib; anterior sclerite of internal surface of valva elongate. Aedeagus strong, extending ventro-terminally, with ventro-lateral fold in median area; caulis fused with aedeagus body; cornutus slender, with small capitulum.

Female genitalia (Figs 22, 23): Sterigma with bilobed posterior plate incised in middle terminally; antrum surroundings membranous, minutely spined; large ring-shaped sclerite on ventral portion of ductus bursae provided with small sublateral prominence; corpus bursae minutely spined except for distal area; ductus seminalis extending from ventral part of corpus bursae, submedially; accessory bursa sublateral, situated just before ring-shaped sclerite of ductus bursae; additional bursa from beyond middle of corpus bursae, subdorsally.

Holotype, male: "Mex: Sinaloa, 8 mi W El Palmito, 6000' X—12—1975, at light; J. POWELL, J. CHEMSAK, T. EICHLIN & T. FRIEDLANDER"; G. S. 6070. Paratypes: 4 males and 3 females, 2 labelled identically as the holotype, 1 collected 8 mi. W. of El Palmito, Sinaloa at 6400' on 8—12. VIII. 72; 3 paratypes collected 24 mi. W. La Ciudad, Durango (7500', 19. VII. 64 and 18. VII. 64) and one from Vera Cruz, collected 5 mi. SE Las Vigas (7500'; 29. IX. 1975).

Saphenista glorianda sp. n.

Alar expanse, 12 mm. Labial palpus ca 1.5, pale ochreous, white terminally and dorsally, remaining parts of head white; thorax pale brownish grey, base of tegula brownish distal part of tegula white. Forewing somewhat expanding terminally; costa weakly curved outwards, more strongly so before apex; termen hardly convex, moderately oblique. Ground colour whitish, suffused with pale brownish grey in dorsal area and base, costa mixed with brown basally and terminally; pattern in form of broad, dark brown dorsal portion of median fascia terminating and rounded subcostally and ochreous-olive costal blotch, brown along costa; subapical blotch towards middle of termen, pale cream-olive, mixed with brownish towards costa; parallel, darker marked with brown spots pattern extending from end of termen to about middle of vein r_2 ; some dark brown dots along termen and beyond disc. Fringes dirty cream; hindwing pale grey with whitish grey fringes median line grey. Variation: in dark specimens dorsal and tornal pattern distinct, almost completely dark brown; apical area more or less suffused with olive or ochreous-cream. Glossy shades among pattern in terminal part of wing.

Male genitalia (Figs. 10—13): Socius slender; median part of transtilla short; sharp process of vinculum long; valva weakly tapering terminally; sacculus

slender basally, somewhat convex posteriorly; basal sclerite of internal surface of valva small. Aedeagus slender with fused caulis and long, slender ventro-apical process; cornutus delicate, with indistinct capitulum.

Female genitalia (Fig. 24): Sterigma partially membranous, with pair of lateral sclerites of dorsal surface; antrum sclerotized; ductus bursae slightly sclerotized, with longitudinally folded walls; large, flattened sack extending ventrally and spined apically present; corpus bursae minutely spined; ductus seminalis from middle of corpus, ventrally.

Holotype, male: "Mex: Nuevo Leon, 4 mi. W. Iturbide, 5500', IX—25—75, flying at dusk; J. POWELL, J. CHEMSAK & T. FRIEDLANDER"; G. S. 13015. Paratypes: 2 males and 2 females labelled similarly as given above (but dated 13/14. IX. 1976 and 25. IX. 1975), one male with abdomen missing collected 17 mi. SE. Saltillo, Cihuahila on 23. IX. 1976 and one 11 mi. E. Revolcaderos, Durango (elevation 7800; 16. VIII. 1972).

Saphenista livida sp. n.

Alar expanse, ca 14 mm. Labial palpus 1.5, brownish ochreous, cream terminally, remaining parts of head whitish, vertex more cream; thorax brown-grey, tegula brown. Forewing somewhat expanding terminally; costa slightly convex; apex rounded; termen straight, oblique. Ground colour greyish with indistinct violet-grey shine, strigulated with brown; base of wing delicately suffused with brownish, paler medially, dorsal blotch not developed; median fascia dark brown, interrupted subcostally, with costal portion brownish; subapical blotch brownish, brown at costa, with some darker dashes, diffuse towards middle of wing where brown suffusion of indistinct tornal marking occurs; some brown dots apically and terminally. Fringes concolorous with ground colour, yellow-ochreous beyond apex, divisions brown. Hindwing broad, pale greyish, mixed with brownish apically, delicately strigulated with brown-grey; fringes white-grey; median line grey.

Male genitalia (Figs 14—16): Median part of transtilla strong; sharp process of vinculum very long, somewhat curved; valva tapering terminally with well developed basal sclerite of internal surface; sacculus slender basally, extending proximally, then convex ventrally. Aedeagus slender, bent, with short, sharp termination; cornutus with small capitulum; caulis fused with aedeagus body.

Holotype, male: "Mex: Durango, 11 mi E. Revolcaderos, 7800', VII—11—72, VEIRS"; G. S. 6051.

Saphenista fluida sp. n.

Alar expanse, 10 mm. Specimen strongly damaged. Shape of forewing as in *S. mediocris* but termen more oblique. Ground colour pale, probably ochreous cream, pattern preserved in apical portion of wing only, dark brown, probably

similar to that in *S. nongrata* as the presence of median, longitudinal part of median fascia shows. Hindwing brownish grey.

Female genitalia (Fig. 25): Papilla analis fairly broad; sterigma with broad lateral parts distinctly sclerotized posteriorly; antrum sclerite short, concave in middle of posterior edge ventrally; ductus bursae rather weakly sclerotized with delicate longitudinal folds entering corpus bursae, with distinct ventral convexity extending along median part and dorso-lateral convex portion in middle; small lateral concavity of corpus bursae followed by short prominence representing accessory bursa; ductus seminalis extending dorsally from beyond middle of corpus bursae.

Holotype, female: "Mex: Veracruz, Fortin de las Flores, XII—15—63; C. A. TOSCHI, M. J. TAUBER Collectors"; G. S. 11794.

CATALOGUE

delicatulana (ZELLER) 1877, Horae Soc. ent. ross., **13**: 137 (*Conchylis*) — comb.

n. Type locality: Bogota, Colombia

lacteipalpis (WALSINGHAM) 1891, Proc. zool. Soc. Lond., **1891**: 500 (*Conchylis*).

Type locality: Windward Side, St. Vincent

multistrigata WALSINGHAM, 1914, Biol. cent.-amer. *Lepid. Heterocera*, **4**: 296 (*Saphenista*). Type locality: Atoyos, Vera Cruz, Mexico

nauphraga RAZOWSKI & BECKER 1983, Acta zool. cracov., **26**: 422 (*Saphenista*).

Type locality: Brusque, Santa Catarina, Brazil

nephelodes (CLARKE) 1968, Proc. U. S. natn. Mus., **125**: 27 (*Amallectis*). Type locality: Cochabamba, Incoachaca, Bolivia

sphragidias (MEYRICK) 1932, Exot. *Microlepid.*, **4**: 265 (*Phalonidia*). Type locality: Andes, Bolivia

fluida sp. n. (p. 402)

nongrata sp. n. (p. 387)

aculeata (RAZOWSKI) 1967, Acta zool. cracov., **12**: 171 (*Phalonidia*) — comb.

n. Type locality: Huigra, Ecuador

praia sp. n. (p. 399)

consona RAZOWSKI & BECKER 1983, Acta zool. cracov., **26**: 423 (*Shaphenista*).

Type locality: Banhado, Quatro Barras, Parna, Brazil

cordifera (MEYRICK) 1932, Exotic *Microlepid.*, **4**: 267 (*Phtheochroa*). Type locality: Rio Songo, Bolivia

embolima RAZOWSKI 1984, Annls zool. Warsz., **38**: 277. Type locality: Sto Domingo, Venezuela

substructa (MEYRICK) 1927, Exotic *Microlepid.*, **3**: 367 (*Phtheochroa*). — comb.

n. Type locality: Mt. Tolima, Colombia

pruinosa (ZELLER) 1877, Horae Soc. ent. ross., **13**: 129 (*Conchylis*). Type locality: Bogota, Colombia

prae fasciata (MEYRICK) 1932, Exot. *Microlepid.*, 4: 266 (*Phalonia*) — comb.

Type locality: Irazu, Costa Rica

illimis sp. n. (p. 400)

consulta sp. n. (p. 400)

glorianda sp. n. (p. 401)

mediocris sp. n. (p. 388)

livida sp. n. (p. 402)

Institute of Systematic
and Experimental Zoology
Polish Academy of Sciences
31-016 Kraków, Sławkowska 17

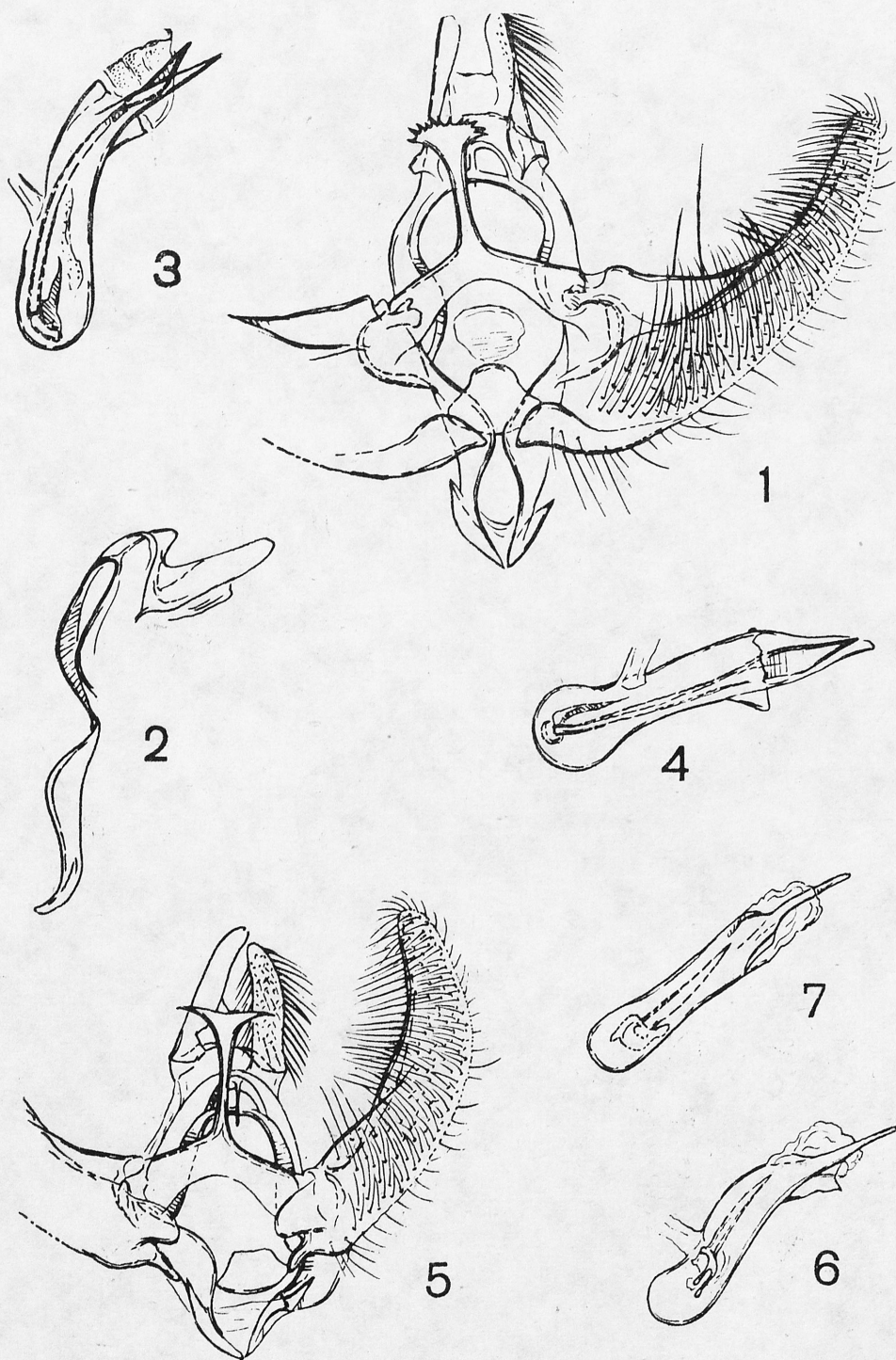
REFERENCE

- RAZOWSKI J. 1985. On the generic groups *Saphenista* and *Cochylis* (*Tortricidae*). *Nota lepid.* Binningen, 8: 61—64.

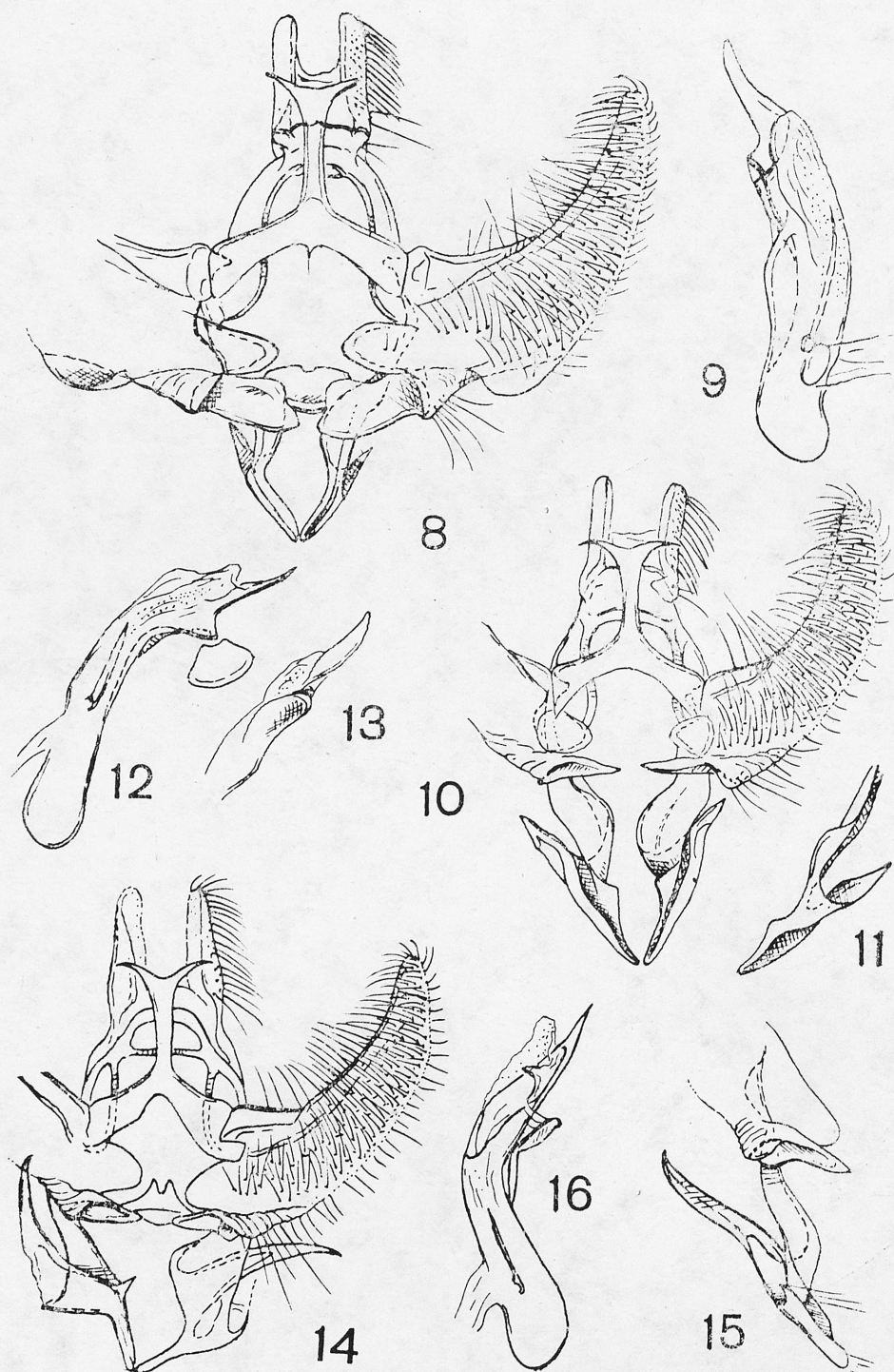
STRESZCZENIE

Praca jest katalogiem gatunków neotropikalnego rodzaju *Saphenista* WALSM. i obejmuje 20 gatunków, z czego 10 zostało opisanych jako nowe.

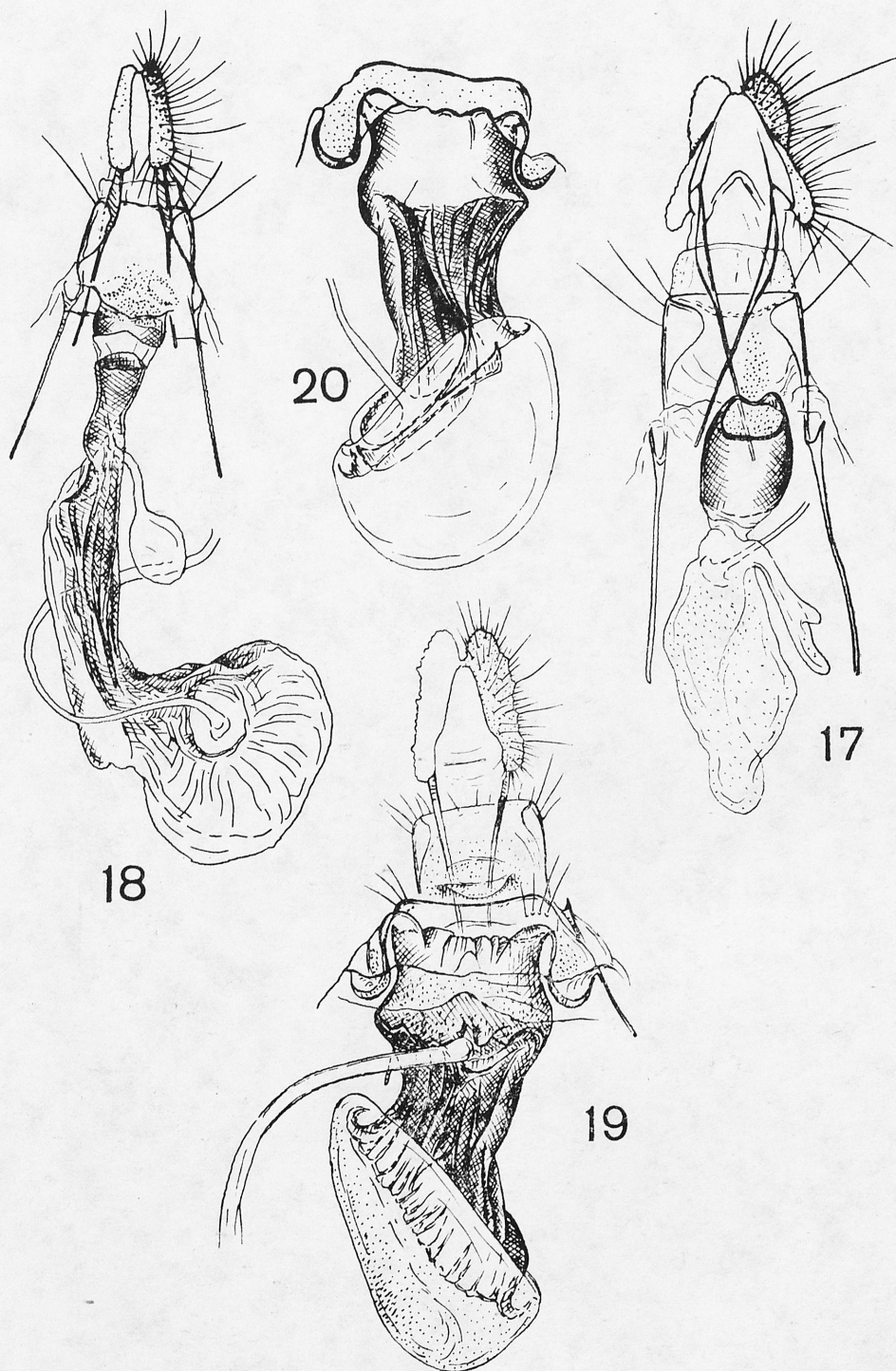
Redaktor pracy: prof. dr A. Krzanowski



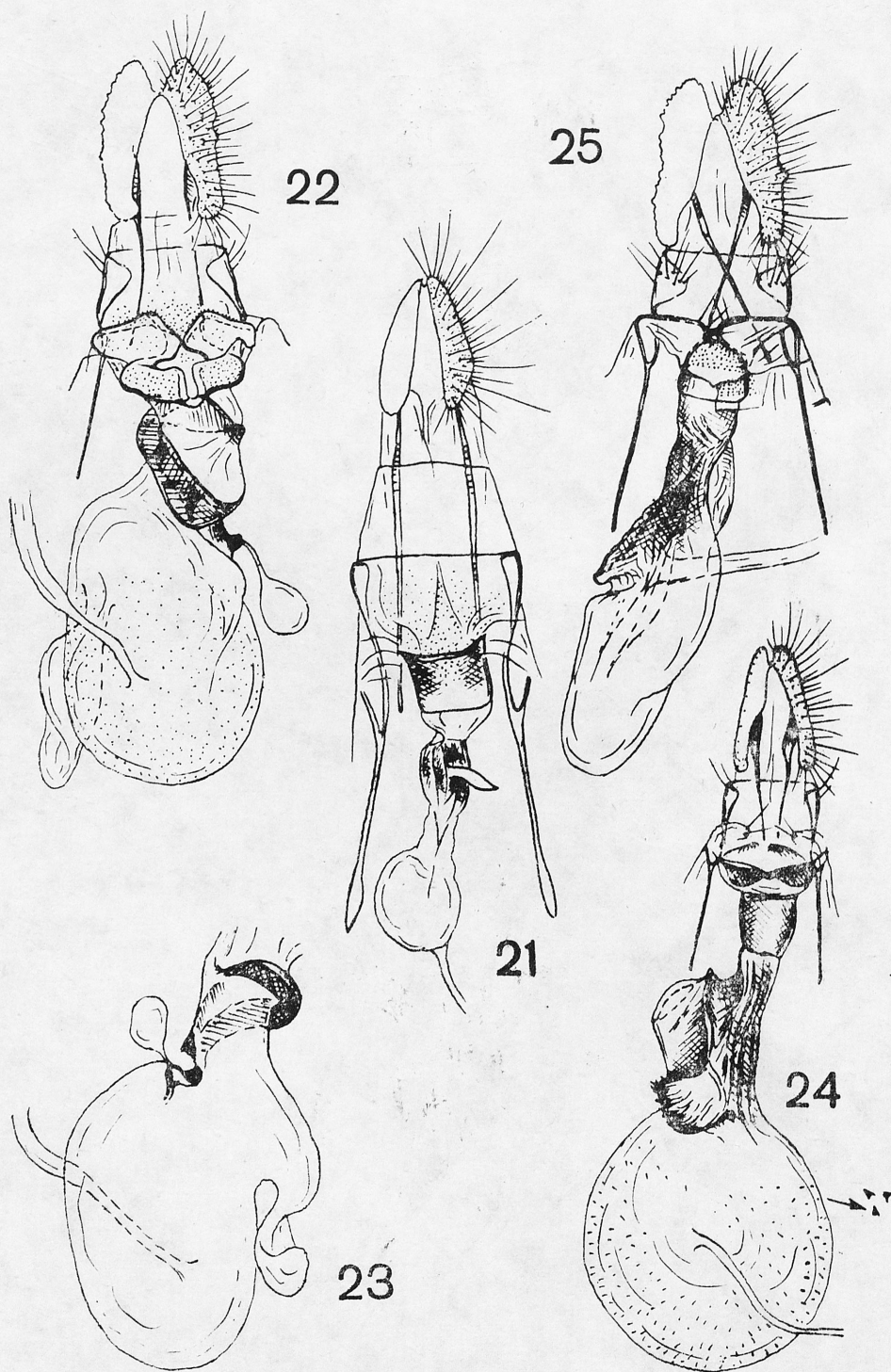
Figs 1—7. Male genitalia of *Saphenista* WALSM.: 1—4 — *S. praia* sp. n., holotype; 5—7 — *S. consulata* sp. n., holotype



Figs 8—14. Male genitalia of *Saphenista* WALSM.: 8, 9 — *S. illimis* sp. n., holotype; 10—13 — *S. glorianda* sp. n., paratype; 14—16 — *S. livida* sp. n., holotype



Figs 17—20. Female genitalia of *Saphenista* WALSM.: 17 — *S. nongrata* sp. n., holotype; 18 — *S. mediocris* sp. n., holotype; 19, 20 — *S. affecta* sp. n., holotype



Figs 21—25. Female genitalia of *Saphenista* WALSM.: 21 — *S. temperata* sp. n., holotype; 22, 23 — *S. illimis* sp. n., paratype; 24 — *S. glorianda* sp. n., paratype; 25 — *S. fluida* sp. n., holotype